

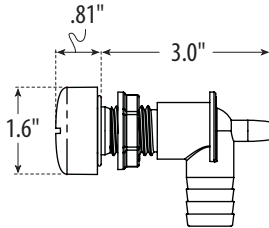


Water Features / Waterway Cascades

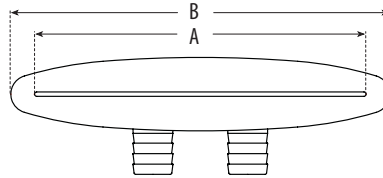
FEATURES:

- Extremely easy to install
- Built-in diffuser
- Easily serviceable

Pat. #6,450,418



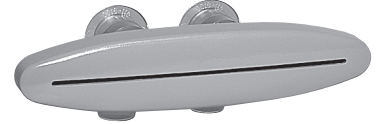
hole saw size: (2) x 7/8" diameter



Part No.	"A" Dimension	"B" Dimension
675-3500	3.5"	4.31"
675-3600	7"	8"
675-3700	9"	10"



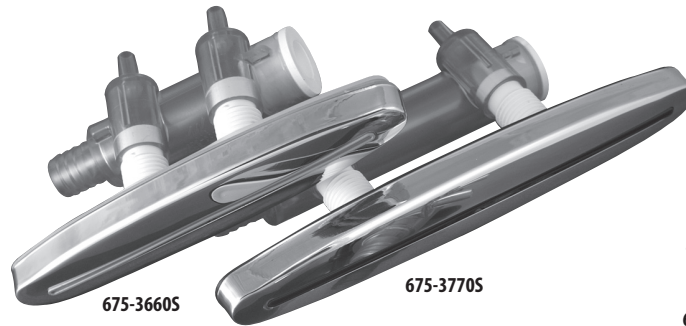
675-3500



675-3600

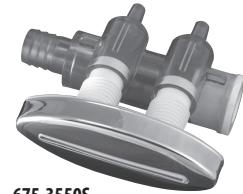


675-3700



675-3660S

675-3770S



675-3550S

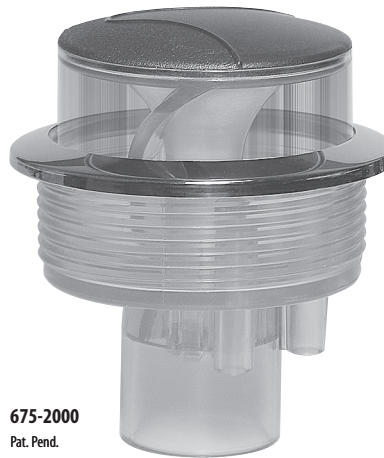
Waterway Cascades

Part No.	Description	Case Quantity	List (US \$)
675-3500	3 1/2" Cascade - (2) 3/4" RB	20	28.39
675-3500S	3 1/2" Cascade - (2) 3/4" RB - Stainless Steel Blade	20	33.77
675-3508L	3 1/2" LED Cascade - (2) 3/4" RB	60	33.84
675-3508LS	3 1/2" LED Cascade - (2) 3/4" RB - Stainless Steel Blade	60	39.30
675-3550	3 1/2" Cascade - (2) 3/4" RB - with Manifold	--	31.66
675-3550S	3 1/2" Cascade - (2) 3/4" RB - Stainless Steel Blade - with Manifold	--	37.05
675-3558L	3 1/2" LED Cascade - (2) 3/4" RB - with Manifold	25	37.12
675-3558LS	3 1/2" LED Cascade - (2) 3/4" RB - Stainless Steel Blade - with Manifold	25	38.21
675-3600	7" Cascade - (2) 3/4" RB	20	31.04
675-3600S	7" Cascade - (2) 3/4" RB - Stainless Steel Blade	80	37.09
675-3608L	7" LED Cascade - (2) 3/4" RB	20	38.61
675-3608LS	7" LED Cascade - (2) 3/4" RB - Stainless Steel Blade	20	44.66
675-3660	7" Cascade - (2) 3/4" RB - with Manifold	--	35.40
675-3660S	7" Cascade - (2) 3/4" RB - Stainless Steel Blade - with Manifold	--	41.45
675-3668L	7" LED Cascade - (2) 3/4" RB - with Manifold	20	42.97
675-3668LS	7" LED Cascade - (2) 3/4" RB - Stainless Steel Blade - with Manifold	20	49.02
675-3700	9" Cascade - (2) 3/4" RB	20	62.03
675-3700S	9" Cascade - (2) 3/4" RB - Stainless Steel Blade	80	69.45
675-3708L	9" LED Cascade - (2) 3/4" RB	20	76.19
675-3708LS	9" LED Cascade - (2) 3/4" RB - Stainless Steel Blade	20	76.19
675-3770	9" Cascade - (2) 3/4" RB - with Manifold	--	66.93
675-3770S	9" Cascade - (2) 3/4" RB - Stainless Steel Blade - with Manifold	--	74.37
675-3778L	9" LED Cascade - (2) 3/4" RB - with Manifold	20	81.10
675-3778LS	9" LED Cascade - (2) 3/4" RB - Stainless Steel Blade - with Manifold	20	87.47



FEATURES:

- Pops up when pressurized
- Drops down when depressurized
- Solid 7/16" rod shaped water stream, projects at 45° angle
- Available in several body styles and colors
- Maximum flow 4.76 GPM @ 3 PSI = 48" cascade



675-2000
Pat. Pend.



675-0707
Pat. Pend.



675-0807
Pat. Pend.



675-0908L

Pop-Up Water Features

Part No.	Description	Case Quantity	List (US\$)
675-0700	Standard - 3/4" RB	50	34.62
675-0710	Standard - 3/4" SB	50	34.62
675-0720	Standard - 3/4" S	50	34.62
675-0730	Standard - 1/2" S	50	34.62
675-0800	Top-Access - 3/4" RB	50	34.62
675-0810	Top-Access - 3/4" SB	50	34.62
675-0820	Top-Access - 3/4" S	50	34.62
675-0830	Top-Access - 1/2" S	50	34.62
675-2000	Pop-Up 180° Waterfall Assembly	32	39.74
675-2000S	Pop-Up 180° Waterfall Assembly - Stainless Steel Cap	32	43.52
675-0908L	LED Pop-Up Water Feature - 3/4" RB	50	40.82
675-0918L	LED Pop-Up Water Feature - 3/4" SB	50	40.82
675-0928L	LED Pop-Up Water Feature - 3/4" S	50	40.82
675-0938L	LED Pop-Up Water Feature - 1/2" S	50	40.82



Spray Fountains

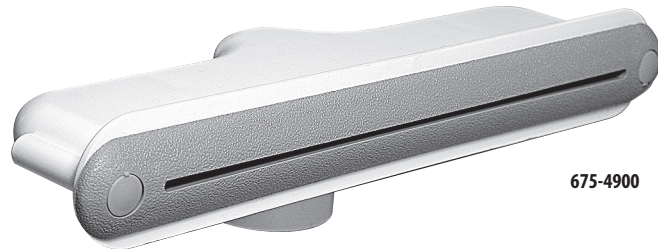
Part No.	Color	Dimensions	Case Quantity	List (US \$)
715-1910	White	ø 1.62" W x 1.25" H	100 (bulk)	6.71
715-1911	Black	ø 1.62" W x 1.25" H	100 (bulk)	8.19
715-1917	Gray	ø 1.62" W x 1.25" H	100 (bulk)	8.19
715-1919-DKG	Dark Gray	ø 1.62" W x 1.25" H	100 (bulk)	8.19
715-1919-BEI	Beige	ø 1.62" W x 1.25" H	100 (bulk)	7.44

8" LOW PROFILE AQUA FALL

FEATURES:

- Simple design - less parts
- Low body profile
- 1" S intake
- 4-15 GPM

Pat. #6,450,418



675-4900

6" AQUA FALL

FEATURES:

- New 304 Stainless Steel escutcheon
- Simple design - less parts
- ¾" S intake
- 3-12 GPM



675-4000S

Aqua Falls

Part No.	Description	Case Quantity	List (US\$)
675-4900	8" Low Profile Aqua Fall	40	62.03
675-4900S	8" Low Profile Aqua Fall - Stainless Steel Blade	40	71.90
675-4000	6" Aqua Fall	50	31.02
675-4000S	6" Aqua Fall - Stainless Steel Blade	50	41.22